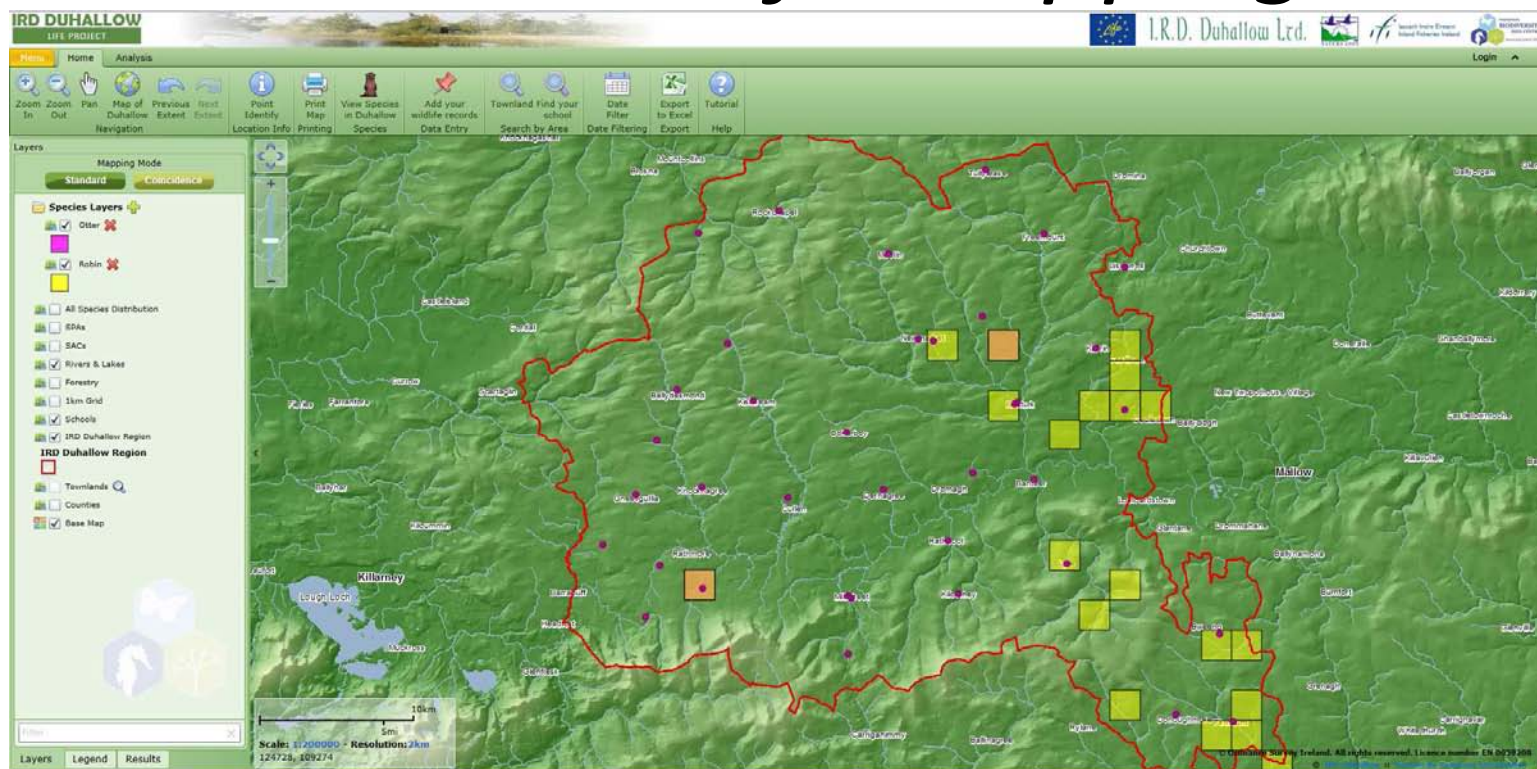




# Tutorial on wildlife mapping



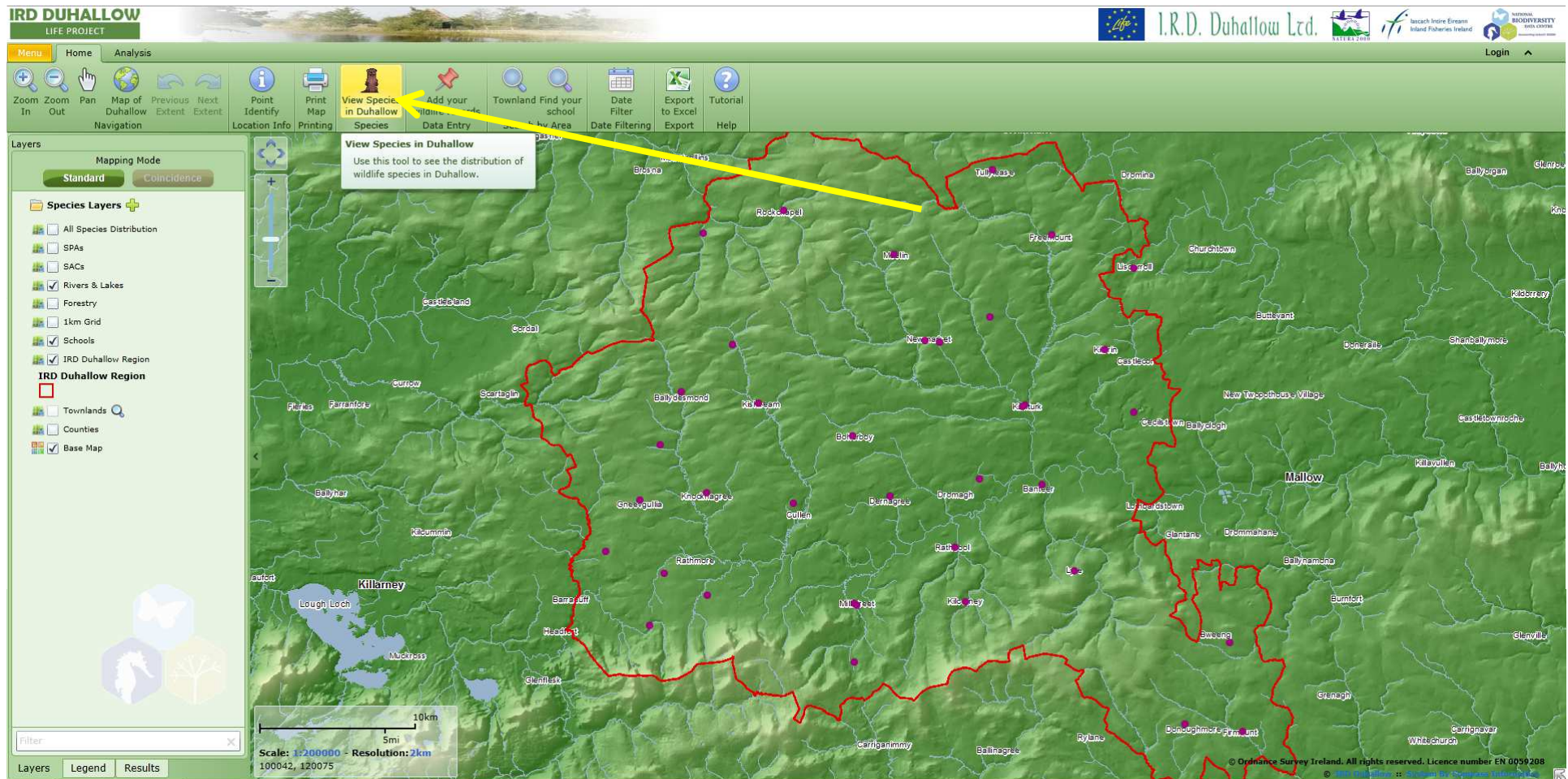
Welcome to this easy to follow tutorial which will show you how to display the distribution of animals, flowers, trees and bugs recorded by school children through out Duhallow. More than 36 National schools and 5 secondary schools in Duhallow took part in the survey. ***See who lives near your school!***



The IRD DuhallowLIFE project is part funded under the LIFE financial instrument of the EU Commission





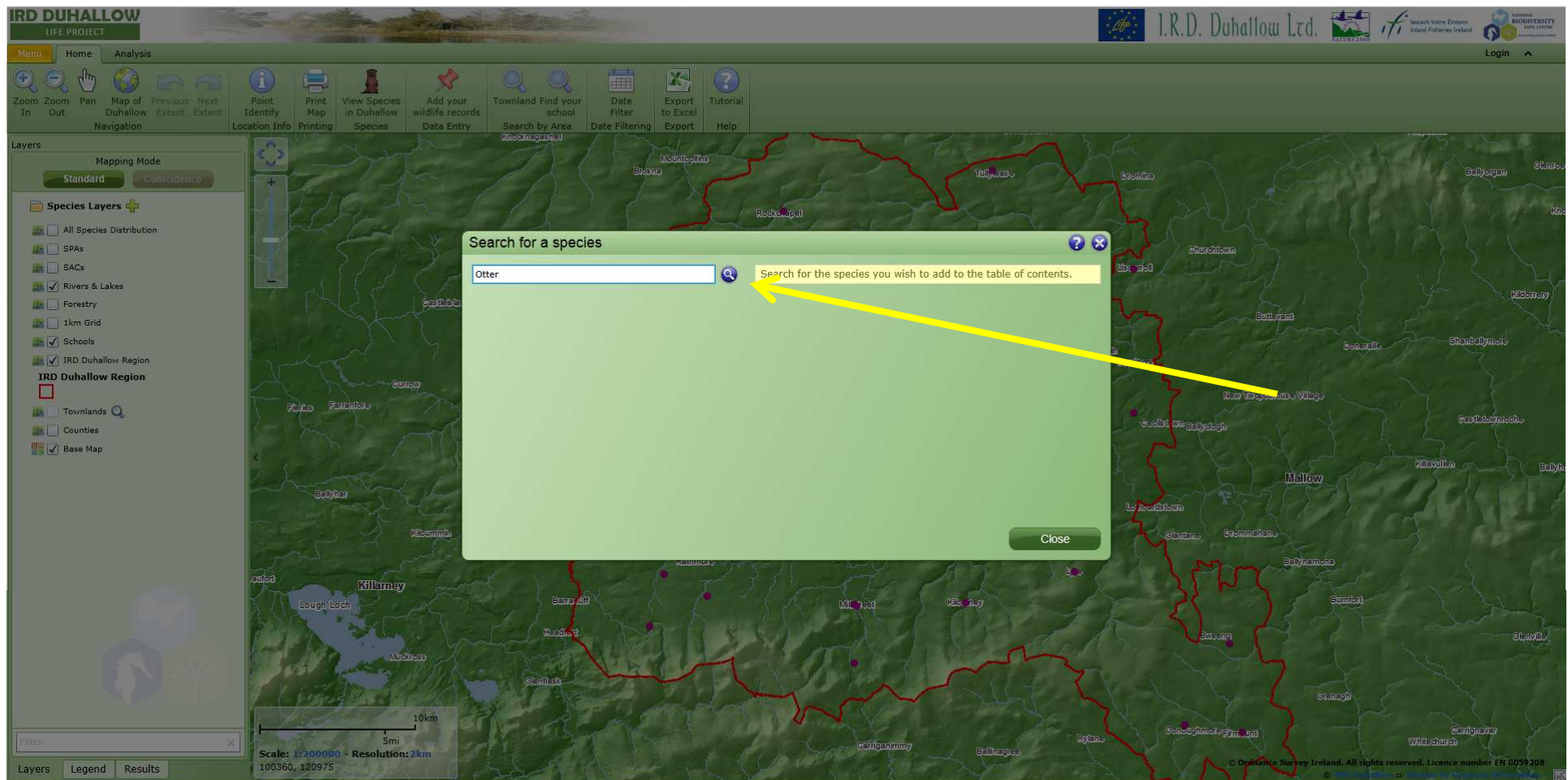


**STEP 1**

## How to display or view species

To view the distribution of any wildlife species on the map, do the following :

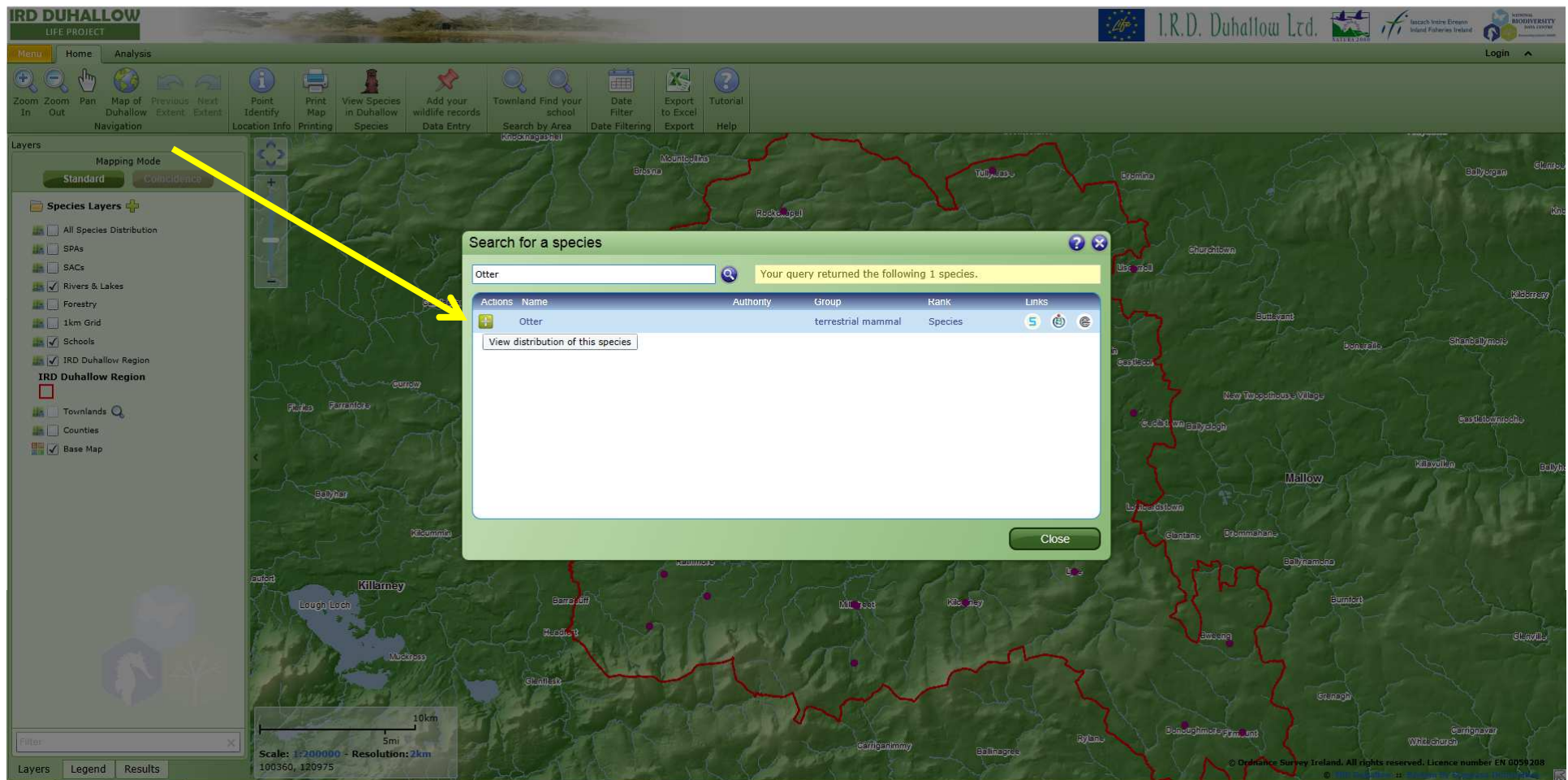
- **Click on the 'View Species in Duhallow' icon at the top of your screen (cartoon picture of an otter), where yellow arrow is pointing.**



## STEP 2

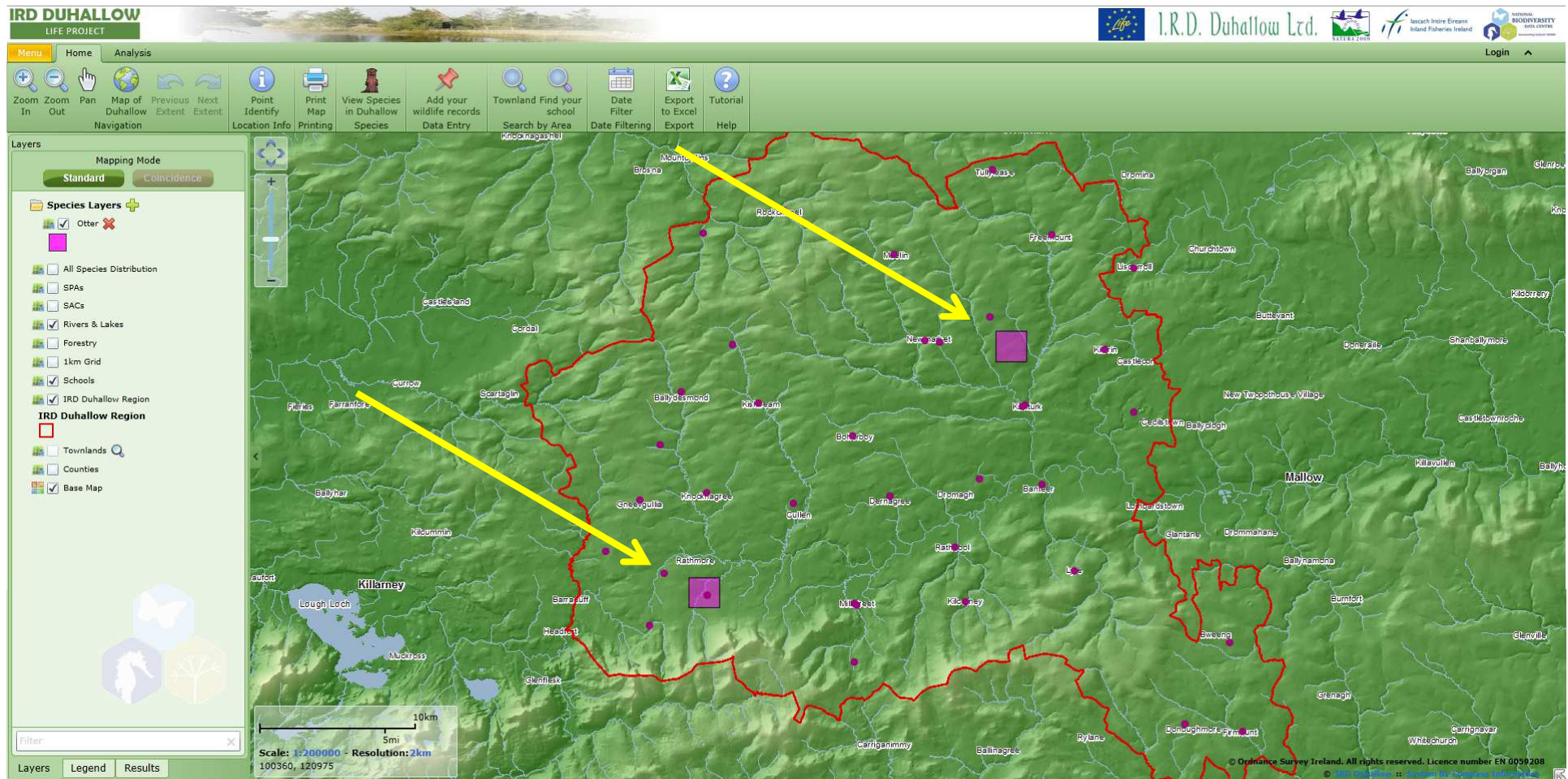
- A popup box like the one above will now appear on the screen.
- Now type the name of the wildlife you are interested in seeing displayed on the map. (we will use otter as an example).
- Then click on the blue icon with the magnifying glass in it. The yellow arrow is pointing at it!





### STEP 3

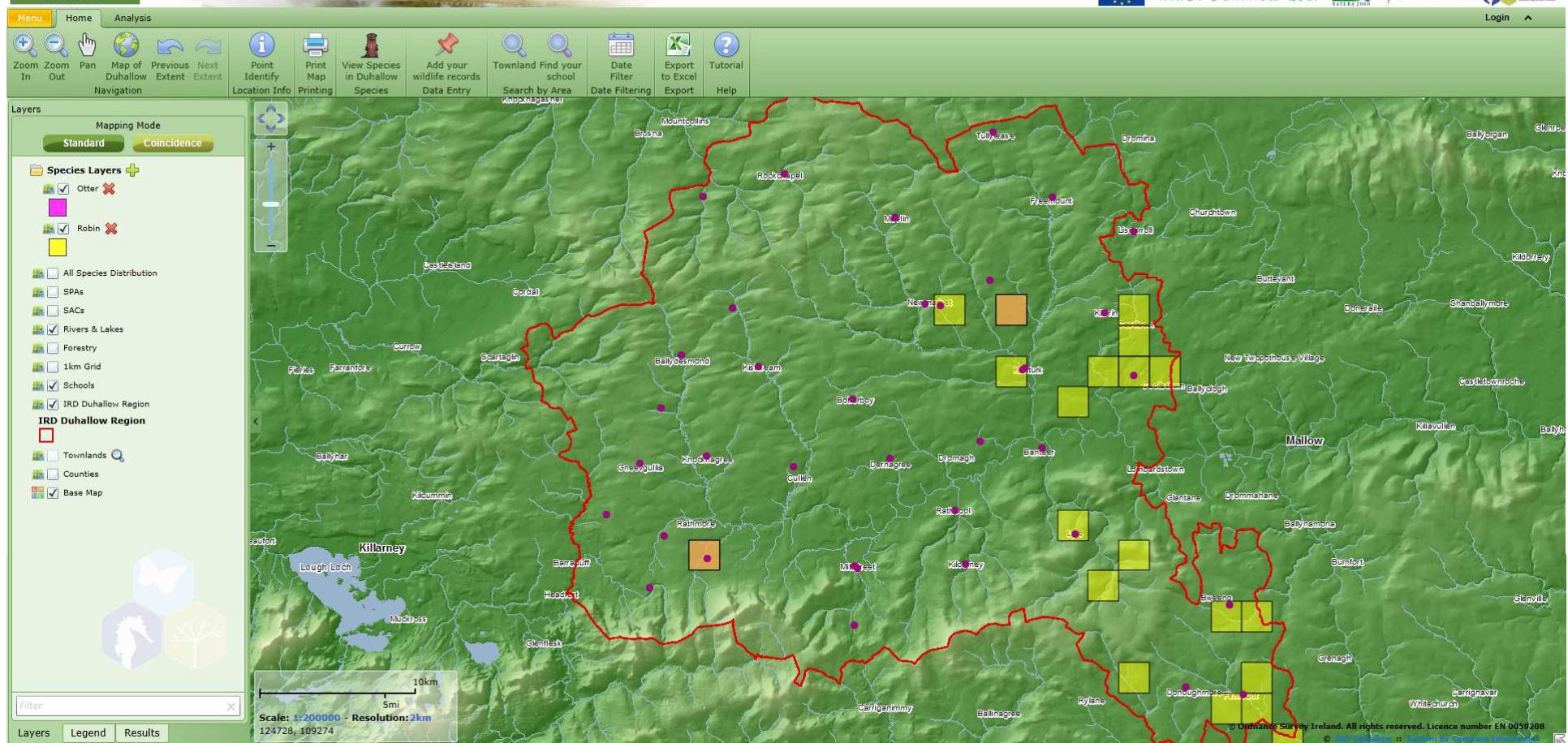
- A popup box like the one above will now appear on the screen wildlife species selected that you want to search (example here is the otter).
- Now click on the green box beside the wildlife species name.



## STEP 4

- Now you see the map with coloured boxes, marking out the locations of where the wildlife species was recorded. See yellow arrows pointing to the purple boxes.
- The locations of the town and villages in Duhallow are the small purple dots so you can see where your school might be located relative to the wildlife records.





## STEP 5

- If you want to see the distribution of more than one species then, repeat the steps adding other wildlife records. Where they overlap, the coloured boxes will blend.
- Try zooming in and out, panning and adding the different layers (see left side of the map) to look at rivers, forestry, special areas of conservation.
- Have fun!